

# WELCOME PACKET

## Birth To Three



Funded by the OEC through the Governor's Education Emergency Relief Fund in partnership with NEAT and the RESC Alliance.



Connecticut Office  
of Early Childhood



Governor's Education  
Emergency Relief



# INTRODUCTION



## Welcome Families!

During this challenging time in the COVID-19 pandemic, it has been difficult for many families to maintain connections with their child's early learning program. This challenge has been especially true for families who need to keep their child home for health and safety concerns, and who may have limited access to technology. The Connecticut Office of Early Childhood (OEC) is able to provide technology support to families with young children who are in need and deserving of support.

These funds come from \$3 billion dollars Congress set aside for the Education Stabilization Fund through the CARES Act. Connecticut received \$27.8 million dollars, of which the Office of the Governor

awarded OEC

**\$4 million  
dollars.**

The OEC is fortunate to have support from the community with this effort. OEC is partnering with the Regional Educational Service Centers Alliance (RESC) and New England Assistive Technology (NEAT) to help distribute iPads, and provide technical support and learning for children and families.



# GUIDELINES



We look forward to assisting your family during this difficult time, and hope that the services and technology we provide will help your family grow and flourish.

In order to assure the best possible outcomes for your family there are several guidelines we ask you follow listed below. If you have any questions, please contact your Birth to Three Service Coordinator.

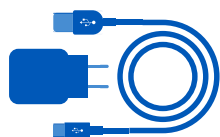
1. **Getting Started with the iPad**
2. **iPad Care**
3. **Internet Safety**
4. **Returning iPad**
5. **Resources**

- ⚙️ **OEC Website**

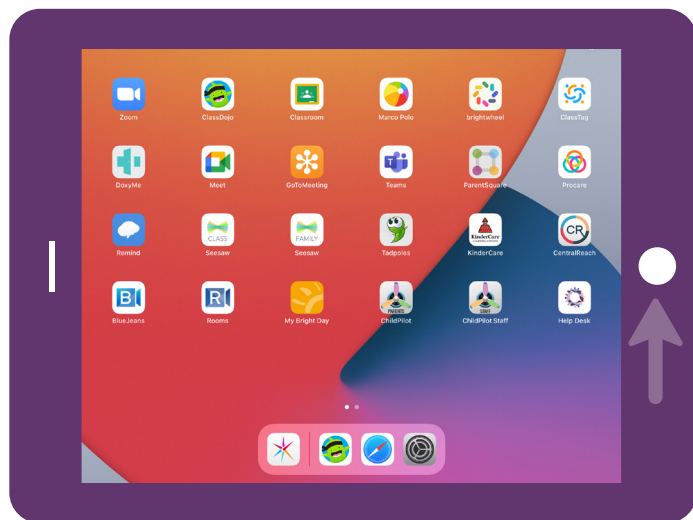
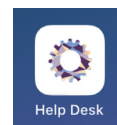
- ⚙️ **Sparkler App**



# GETTING STARTED



- ⚙️ You will receive an iPad with a case and screen protector on it, charger and adapter.
- ⚙️ Your iPad may or may not come charged, so please hook it up to the charger when you receive it.
- ⚙️ Be careful to keep the charger with the iPad or in a specific location to avoid misplacing it.
- ⚙️ This iPad is supervised and managed by EASTCONN, (part of the RESC Alliance).
- ⚙️ Some functions of the iPad will not be able to be used.
- ⚙️ If needing Technical Support, click on the Help Desk App icon that looks like this on the iPads; or call **860-407-6789** between 9am - 4pm for assistance.



When you first receive the iPad, the home screen will look similar to this after pressing the home button.

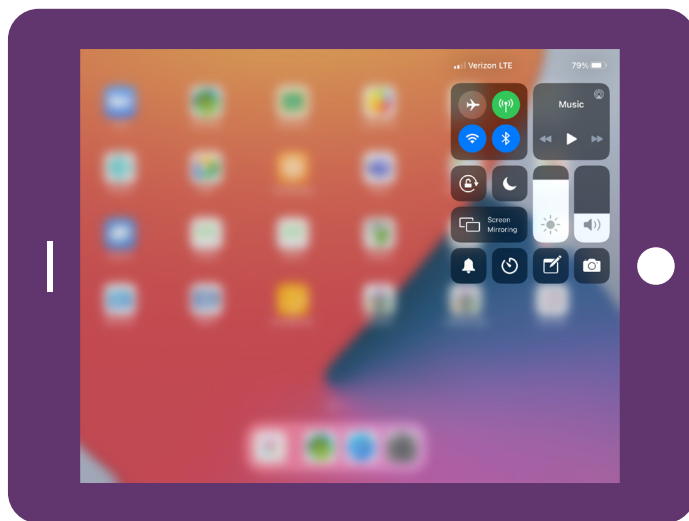
Some apps may not apply to you, so check with your program for which one's are for you.



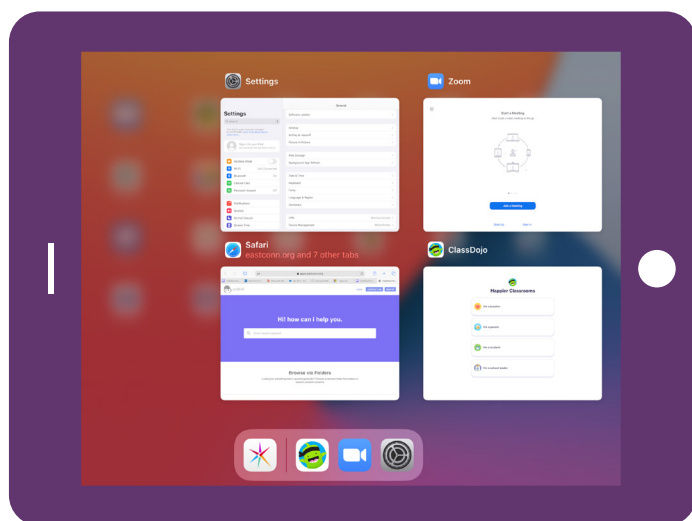
# GETTING STARTED



When you want to quickly access the settings for sound, camera, brightness, WIFI, Bluetooth, etc., slide down the top right corner of the iPad and you will see this:



To access the full settings, click on the Settings application located on the home screen in the bottom bar.



To close out open apps and windows, double click on the home button on the bottom of the iPad, then swipe up each open app or window to close it out.



# IPAD CARE



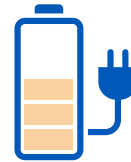
## Care of Your iPad

Store the iPad in the case provided, and in a safe and secure location.

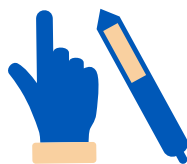
- ⚙️ Protect the iPad as you would your purse or wallet.
- ⚙️ Don't leave your iPad in a car.
- ⚙️ Don't leave the iPad unattended in a public space.



Protect your iPad from liquids and extreme temperatures.



When charging, make sure the charging cord isn't a tripping hazard.



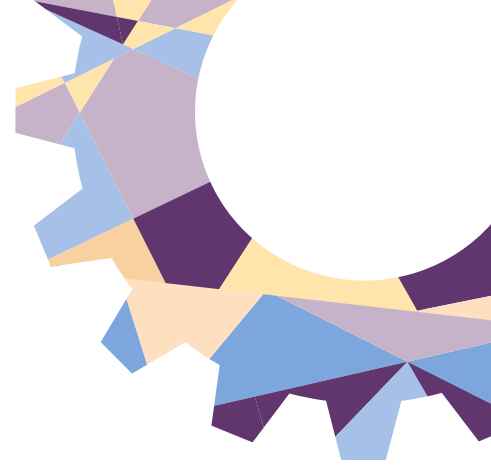
Only use your fingers or a special stylus (pointer) on the screen.



Report a lost or stolen iPad immediately by calling your Birth to Three Service Coordinator.



# INTERNET SAFETY



## Internet Safety

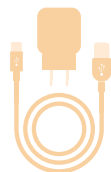
- ⚙ Always supervise children while they browse the internet.
- ⚙ Always keep your passwords secure.
- ⚙ Only allow family members to use the iPad.
- ⚙ Only connect the iPad to familiar wireless networks.
  - ⚙ Avoid using your iPad in a public space, such as a fast food restaurant.
  - ⚙ Using your public library should be safe.
- ⚙ Only communicate online with people you can identify.
  - ⚙ Never open attachments without trusting the sender.
- ⚙ Internet content provided by the cellular service is filtered for the protection of your children.
- ⚙ Internet content provided by home or commercial Wi-Fi networks may not be filtered.
- ⚙ Always remain careful about sharing your personal information. Learn how to recognize and protect yourself from phishing (the tricks that are used to steal information and more) here, <https://www.consumer.ftc.gov/articles/how-recognize-and-avoid-phishing-scams>



# RETURNING IPAD

## Return of Your iPad

- ⚙️ Save the box you received the iPad in.
- ⚙️ When asked to return the iPad, make sure you include:
  - ⚙️ The iPad
  - ⚙️ The case
  - ⚙️ The charging cord
  - ⚙️ The charging adapter
- ⚙️ Talk with your Birth to Three Service Coordinator about how to return the iPad, whether to give to the Service Coordinator or mail to New England Assistive Technology (NEAT).



### All iPads will be returned to:

New England Assistive Technology  
120 Holcomb St.  
Hartford, CT 06112  
**ATTN:** Jennifer Alexander

## Important iPad Guidelines

- ⚙️ Use of the iPad should be limited to specified program activities.
- ⚙️ You are not responsible for a broken, lost, or stolen iPad.
  - ⚙️ **However**, you are responsible to report broken, lost, or stolen iPads as soon as you can to your Birth to Three Service Coordinator.
- ⚙️ Your Birth to Three program may not be able to replace a broken, lost, or stolen iPad.





# RESOURCES

Funded by the OEC through the Governor's Education Emergency Relief Fund in partnership with NEAT and the RESC Alliance.



Connecticut Office  
of Early Childhood



Governor's Education  
Emergency Relief

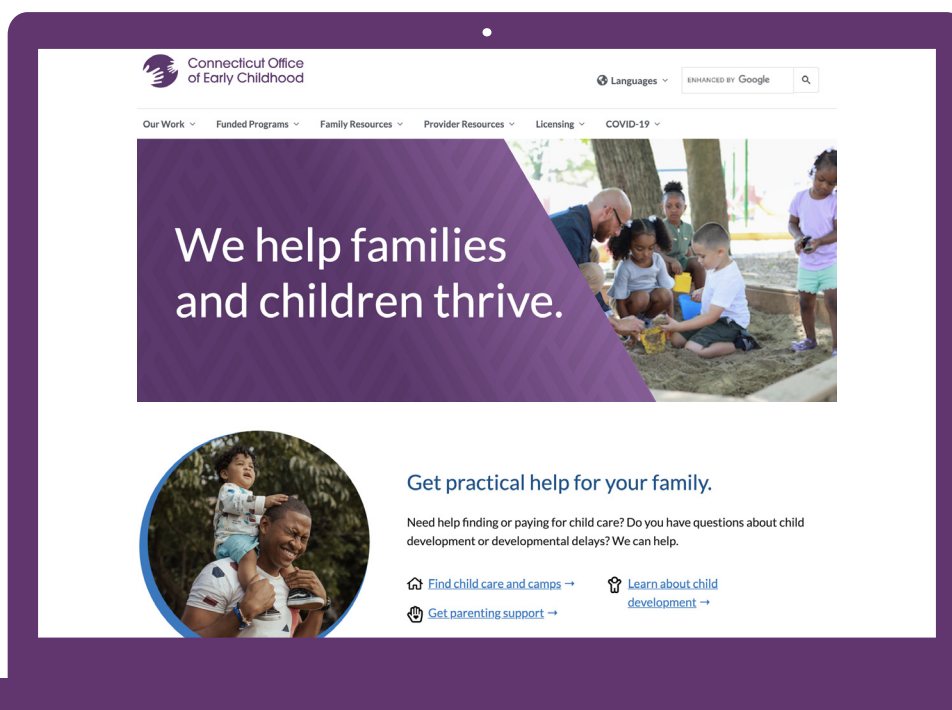


# OEC WEBSITE

## OEC Resources for Families

We know this is a challenging time for families. Here are some resources that might help:

- ⚙️ **Finding Support** — Includes tips on dealing with stress, resources for financial and food assistance, and taking care of yourself
- ⚙️ **Supporting Your Child at Home** — Get ideas on supporting your child's learning and development
- ⚙️ **Child Care During COVID-19** — Find out how child care programs are keeping children safe and how to get your child to wear a mask correctly
- ⚙️ **Child Care Near You** — Call 2-1-1 or visit [211childcare.org](https://211childcare.org) to find out about the child care options in your area
- ⚙️ **The Birth To Three System** — Learn more about the supports available for families





# Learn through play with sparkler

Sparkler sparks healthy early development for children (0-5) and families in Connecticut. All families have the option of using Sparkler to access tips and play-based learning activities to develop children's hearts, minds, bodies, and words. Families already enrolled in Birth to Three can choose to use Sparkler to complement their child's Birth to Three program or use it with other children in the family (siblings). Sparkler is in English and Spanish, for iOS or Android.

## How to Register:

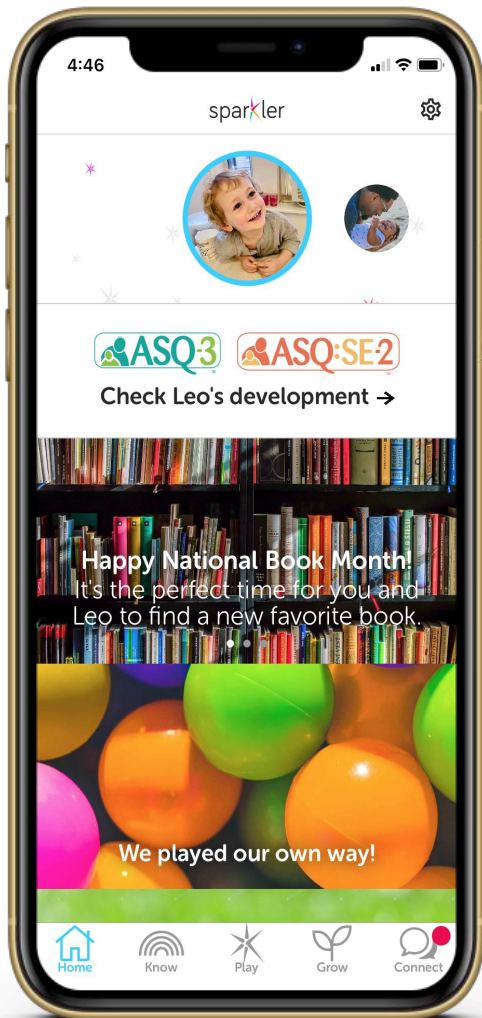
1. Tap "Create a New Account" In Sparkler
2. Enter Sparkler Access Code:

8 0 2 3

3. Enter your name and email to create your account
4. Create your password
5. Enter your phone number, address, ZIP (optional)
6. Choose Your Group in the drop-down menu — Birth to Three for your child already receiving Birth to Three services OR Sibling for a brother or sister who is not in Birth to Three.

## Birth to Three or Sibling

7. Review "Sponsoring Partners" and Privacy
8. Create a profile for your child: name, preferred pronoun, birth date, and photo (optional)





# How to Use sparkler With Your Child

## Know



- **Celebrate Milestones:** Complete Ages & Stages Questionnaires® for siblings (they aren't "on" for Birth to Three children, because they have already been screened).
- **Results:** Submit to get results and support from 211 Child Development.

## Play



- **Play to Learn:** Young children learn through play with YOU! Sparkler has a 1,000+ playful, standards-based activities to help you and your child learn together.
- **Develop Skills:** Build heart, mind, body, and words.

## Grow



- **Track Accomplishments:** Track what you read, learn, and play in Grow, Sparkler's scrapbook.
- **Share:** Share to keep track of goals/progress together.

## Connect



- **Coaching:** Get tips and advice.
- **Q&A:** Sparkler offers two-way communication that can link parents and the systems that support them.

Questions? Please email [support@playsparkler.org](mailto:support@playsparkler.org)